
Calendar

The 'hands on' training courses will start on Thursday morning and end on Friday in the late afternoon. The calendar of the workshops can be found on the LIFE website www.lifeleuven.be

Reservations

Reservations should preferably be made by e-mail or fax and will be accorded on a 'first come - first serve' basis, since the number of available places per course is limited. Participation fee amounts to:

100€ (residents, assistants)

250€ (ESGE & VVOG members)

350€ (the others)

Sponsored by:



Name: _____

First Name: _____

Institutional Affiliation: _____

Address: _____

City: _____

Zip Code: _____

Country: _____

Tel.: _____

Fax: _____

E-mail: _____

hereby inscribes to a TVE training course,
preferably on the following dates:

1st preference: _____

2nd preference: _____

Payable to LIFE vzw
Tiensevest 168, B-3000 Leuven, Belgium

Bank account: 330-0658319-34
Swift (BIC): BBRUBEBB
IBAN: BE68 3300 6583 1934
Bank office: ING Aarschot
Markt 5, B-3200 Aarschot, Belgium



Transvaginal Endoscopy Training Courses

L.I.F.E.

Leuven Institute for
Fertility & Embryology



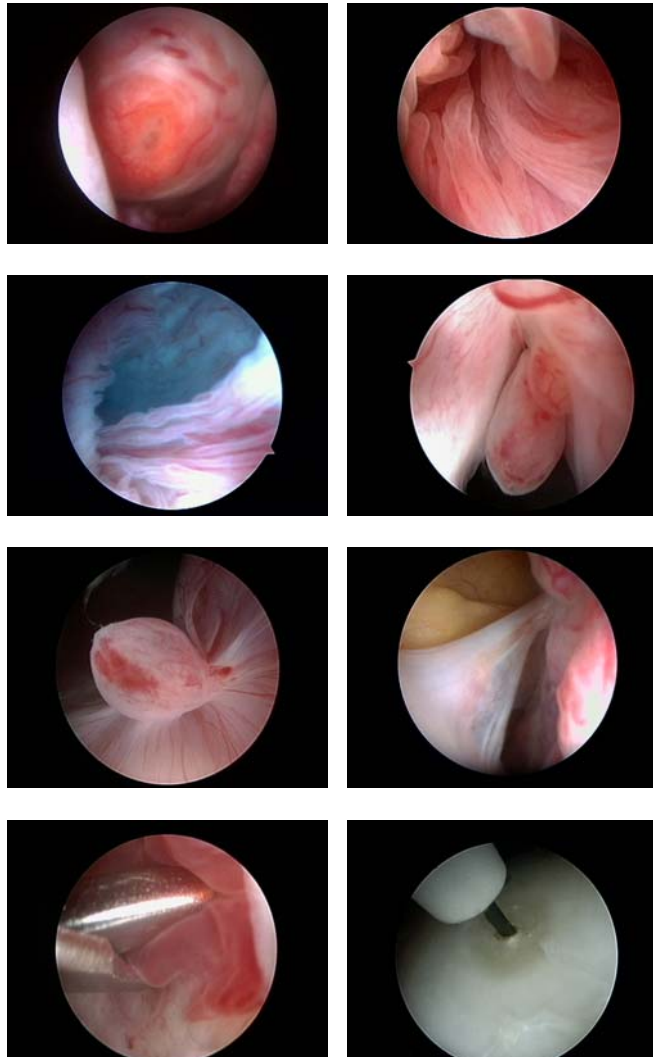
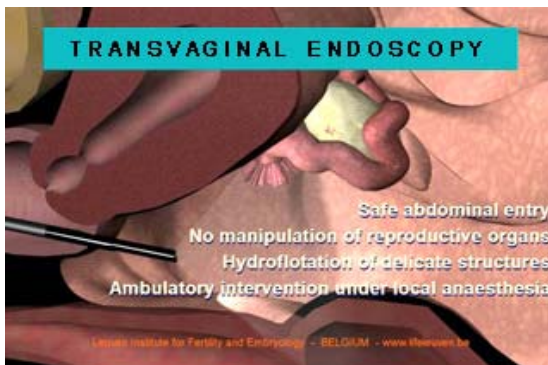
www.lifeleuven.be

lifeleuven@lifeleuven.be
Fax +32 (16) 27 01 97

Since 1997 we started using the vaginal approach as a diagnostic endoscopic tool in the exploration of the subfertile patient.

The transvaginal endoscopy (TVE) intends to offer a patient friendly, minimally invasive way for an accurate exploration of the female genital tract on an outpatient basis.

All those involved in reproductive medicine and interested in an early and reliable diagnosis will, together with his or her patients, definitely benefit from this procedure.



Program

Participants will be offered the possibility of

- assisting live TVE procedures
- 'hands on' TVE training
- attending lectures concerning
 - ♦ technical aspects
 - ♦ procedural aspects
 - ♦ diagnostic potential
 - ♦ One Stop Fertility Clinic
 - ♦ operative potential
 - ♦ safety and risks
 - ♦ future developments

Please mail, fax or send to:

L.I.F.E.
Training Courses TVE
Tiensevest 168
B-3000 Leuven
Belgium

Fax: +32 16 27 01 97
E-mail: lifelieven@lifeleuven.be

sponsored by

